



## E-HANDBOOK

### ORGANISERS



## LINKS TO CONTENTS

<b>Chairman's Address</b>	3	<b>LJ (Singapore)</b>	18	<b>Forum Etiquette</b>	60
<b>Forum Theme:</b>		<b>LJ Group Schedule</b>	19	<b>Things to Bring</b>	60
<b>Our Green Singapore</b>	4	<b>LJ Green Economy</b>	21	<b>Wi-Fi Connection - TP</b>	61
<b>Sub-Themes</b>		<b>LJ Green Resources</b>	24	<b>Location Maps - TP</b>	64
• <b>Green Economy</b>	6	<b>LJ Sustainable Living</b>	28	<b>LJ Pack List</b>	69
• <b>Green Resources</b>	7	<b>LJ Resilient Future</b>	32	<b>Overseas Pack List</b>	70
• <b>Sustainable Living</b>	8	<b>LJ (Desaru)</b>	35	<b>Departing SG</b>	71
• <b>Resilient Future</b>	9	<b>Speakers</b>	39	<b>Immigration Matter</b>	71
<b>Programme</b>	10	<b>Panel 1</b>	41	<b>Dos &amp; Don'ts - Desaru</b>	72
• <b>Day 1 Fri 15 Sep</b>	11	<b>Panel 2</b>	45	<b>Lotus Resort Map</b>	73
• <b>Day 2 Mon 18 Sep</b>	12	<b>Performances</b>	50	<b>Social Night Invitation</b>	74
• <b>Day 3 Tue 19 Sep</b>	13	<b>Group GE 1-4</b>	52	<b>Social Night Info</b>	75
• <b>Day 4 Wed 20 Sep</b>	14	<b>Group GR 1-4</b>	54	<b>Social Night Prep</b>	76
• <b>Day 5 Thu 21 Sep</b>	15	<b>Group SL 1-4</b>	56	<b>Important Information</b>	78
• <b>Day 6 Fri 22 Sep</b>	16	<b>Group RF 1-4</b>	58	<b>Acknowledgements</b>	79



Mr. Paul Yap

Chairman, Polytechnic Forum 2023  
Director, Student Development & Alumni Affairs

A very warm welcome to the Polytechnic Forum (PF) 2023!

Since 1996, PF has been providing a platform for polytechnic students to gain a deeper understanding of important national issues. This year's forum is organised as part of the inaugural Singapore Young Leaders Programme, which brings together student leaders like yourselves, to participate in activities that will develop and hone your leadership skills.

In a world that is facing unprecedented sustainability challenges, PF2023 presents an opportunity for you to have your say in Singapore's move towards a greener, brighter and more sustainable future. This year's theme – "Our Green SG" – invites you to dream and envision

together with your peers on what your green Singapore can look like and how we can get there. In this forum, you will explore this theme through a thoughtfully curated ensemble of activities – including peer discussions, learning journeys, talks, as well as engagements with government and industry leaders.

I encourage all of you to think boldly, engage in meaningful discussions, challenge the status quo, and propose innovative solutions during this forum. Remember also to make friends, collaborate well and embrace your fellow participants' diversities and unique differences. Above all, I hope the skills honed, networks gained, and insights uncovered along this journey will remain with you for life, long after your PF chapter has closed.

I wish you all an enriching and fruitful PF experience. Have fun and happy ideating!



## OUR GREEN SINGAPORE



Sustainability is a vital part of our future! Singapore is facing several sustainability challenges today and these issues will continue to be a concern for young Singaporeans in the coming years. Companies and individuals are realising that the sustainability agenda cannot be mutually exclusive. In fact, they should work together to create a more sustainable world for all of us. It is therefore important for us to tackle problems together with stakeholders such as businesses, government agencies and community groups.

“We will strive to become a zero waste nation, consuming less materials and giving them a second lease of life. We will build a green economy, nudging our businesses into doing good while also doing well.

Continued on Next Page >

## OUR GREEN SINGAPORE

It is our duty and responsibility to make Singapore even greener and more liveable, and to work with others to build better cities and a healthier planet, for ourselves and future generations.” (Prime Minister Lee Hsien Loong, Sustainable Singapore Blueprint)

The theme of Polytechnic Forum 2023 (PF2023) is Our Green SG.

The PF2023 program has been created for you to explore possibilities toward a more sustainable future. With the knowledge and rich discussions that PF2023 provides, we hope it raises your consciousness to take daily steps towards sustainability and make a difference in the world around Singapore and you.

The PF2023 takes inspiration from the Singapore Green Plan 2030 (<https://www.greenplan.gov.sg/>) and the Sustainable Singapore Blueprint.

The Forum will be facilitated by a group of trained facilitators from the 5 polytechnics led by the following:

Name	Role
Lynn Ng	Chief Facilitator
Hernieyati Mamat	Deputy Facilitator (Green Economy & Green Resources)
Eric Quek	Deputy Facilitator (Sustainable Living & Resilient Future)
Charmaine Ooi	Communications Manager (Overseeing Presentations & Panel Discussions)



## GREEN ECONOMY

What exactly is Green economy? In short, it is an economic system aiming at reducing environmental risks and ecological scarcities. It also prioritises use of renewable resources. Transitioning to a green economy is a no-brainer. It helps to protect the environment, mitigates impacts of climate change, and promotes using resources more efficiently. So how does it affect you? To start, it promotes job opportunities, decent



income and sustainable economic growth. Plus, it can contribute to improved health and overall quality of life.

Singapore's pivot to net zero will entail significant transformation in all facets of daily life including the economy. **Are you ready to be the change you wish to see in the world?**

### GE Facilitation Team Lead: Alice Ling

Group	Facilitator	Polytechnic
GE 1	Adrian Lim Li Lai	NP
GE 2	Seow Josefina	RP
GE 3	Hengky Chang	NYP
GE 4	Erwin Merijn Wouterson	SP



## GREEN RESOURCES

Green resources refer to natural resources that are renewable, non-polluting, and have a low impact on the environment. Some examples of green resources are solar, wind, hydro power, rainwater harvesting, recycled materials, sustainable agriculture, and reforestation. These resources are considered "green" because they offer a more environmentally friendly and sustainable alternative to traditional, non-renewable resources such as fossil fuels. The fact is if we do not transition to the use of green resources, some consequences include climate change, environmental degradation, resource depletion and health impacts. All of which are already happening at an alarming rate. Reducing dependence on non-renewable resources requires conviction and a mindset change. **How can you be part of this green revolution?**



### GR Facilitation Team Lead: Allen Roche

Group	Facilitator	Polytechnic
GR 1	Akasta Sinaga	NP
GR 2	Chia Chew Lin	SP
GR 3	Foo Yong Wee	NYP
GR 4	Rabiah Binte Mohamed Dawood	RP



## SUSTAINABLE LIVING

The Government's efforts alone, through policies, are not sufficient for Singapore to achieve the United Nations' Sustainable Development Goals net zero by 2050. The choices we make today will either positively or negatively affect Singapore's social compact. For instance, taking public transport can help reduce our national carbon footprint. Raising carbon taxes could mean higher electricity bills for households.

We are all stakeholders in this collective effort for sustainable living. How many sustainability habits are you already practising? **How prepared are you to play your part to help Singapore achieve sustainable living?**



### SL Facilitation Team Lead: Viji Vijaykumarr

Group	Facilitator	Polytechnic
SL 1	Loh Yeok Ling (Belinda)	NYP
SL 2	Melvin Gan	NP
SL 3	Siti Hamimah Binte Abd Hamid	RP
SL 4	Jeremy Tan	SP





## RESILIENT FUTURE

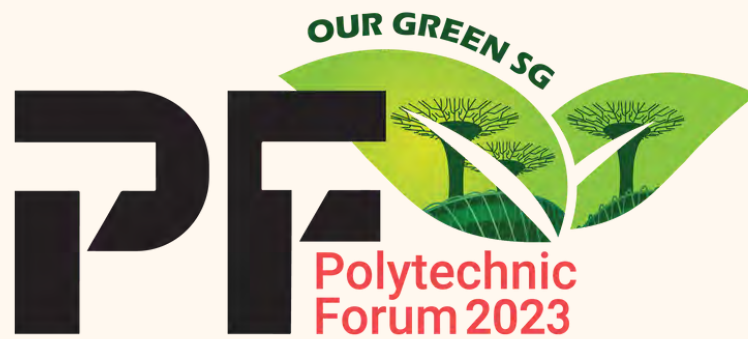
Faced with an ever-changing global stage, increasing global temperatures, rising sea levels, supply chain disruptions and crises of every nature possible, the Singapore government is keenly aware of the need to adapt and evolve in the face of change. According to the World Economic Forum, young people like yourselves, hold the key to creating a better future. You are the most affected by the crises facing the world, and yet you are also the ones with the most innovative ideas to build a better society for tomorrow. **How ready are you to participate in sustainability-related industries to create a resilient future for Singapore?**



**RF Facilitation Team Lead: Laurinda Wee**

Group	Facilitator	Polytechnic
RF 1	Tan Pang Wei	NYP
RF 2	Mariam	NP
RF 3	Leong Yihui	RP
RF 4	Cyrine D/O Antony Joosa	SP





# PROGRAMME

CONFIRMED AS OF 9 SEPTEMBER 2023

TEMASEK CONVENTION CENTRE  
(TCC)



D1

**FRIDAY, 15 SEPTEMBER 2023**

TIME	DAY 1 PROGRAMME	VENUE
9:00 AM	Registration & PF 2023 Kit Collection	TCC Foyer & Corridor
9:40 AM	All to be Seated	TCC
9:45 AM	Address by Chairman, PF 2023 Admin Brief	TCC
10:15 AM	Ice-Breaker Activity: Make Your Connection Team Bonding Activity: PF Race Prize Presentation	TCC, Blk 34 Level 1, Multi-Purpose Hall, Aviation Academy
12:00 PM	Lunch	TCC Foyer & Outside of TCC
2:30 PM	Admin Brief: Overseas Programme	TCC
3:15 PM	All to be Seated	
3:30 PM	Opening Ceremony GOH: Minister Grace Fu	
4:15 PM	Tea Break and Interaction with GOH	TCC Foyer & Outside of TCC
5:00 PM	Admin Brief: Day 2 Programme & Facilitation	TCC
5:30 PM	Briefing in Breakout Groups	
6:00 PM	End of Day 1 Programme - Dismiss	



D2

## MONDAY, 18 SEPTEMBER 2023

TIME	DAY 2 PROGRAMME	VENUE
8:00 AM	Arrival Attendance taking by Facilitators Depart for Learning Journey	TCC
11:30 AM	Lunch	TCC Foyer & Outside of TCC
1:30 PM	Energisers	TCC
1:45 PM	All to be Seated	
2:00 PM	Panel 1: Towards a Net Zero Economy	
3:30 PM	Tea Break	TCC Foyer & Outside of TCC
4:15 PM	Admin Brief: Breakout Rooms	TCC
4:30 PM	Reflection: Learning Journey & Panel Discussion	<b>GE:</b> Blk 22, Level 5, Rooms 128, 129, 130, 131 <b>GR:</b> Blk 22, Level 6, Rooms 153, 154, 155, 156 <b>SL:</b> Blk 18, Level 5, Rooms 85, 86, 87, 88 <b>RF:</b> Blk 18, Level 5, Rooms 106, 107, 108, 109
6:00 PM	End of Day 2 Programme - Dismiss	



D3

## TUESDAY, 19 SEPTEMBER 2023

TIME	DAY 3 PROGRAMME	VENUE
8:00 AM	Arrival Attendance taking by Facilitators Depart for Learning Journey	TCC
11:30 AM	Lunch	TCC Foyer & Outside of TCC
1:30 PM	Energisers	TCC
1:45 PM	All to be Seated	
2:00 PM	Panel 2: Transforming Singapore into a Liveable and Resilient City	
3:30 PM	Tea Break	TCC Foyer & Outside of TCC
4:15 PM	Admin Brief: Overseas Programme	TCC
4:45 PM	Reflection: Learning Journey & Panel Discussion	<b>GE:</b> Blk 22, Level 5, Rooms 128, 129, 130, 131 <b>GR:</b> Blk 22, Level 6, Rooms 153, 154, 155, 156 <b>SL:</b> Blk 18, Level 5, Rooms 85, 86, 87, 88 <b>RF:</b> Blk 18, Level 5, Rooms 106, 107, 108, 109
6:00 PM	End of Day 3 Programme - Dismiss	



D4

WEDNESDAY, 20 SEPTEMBER 2023

TIME	DAY 4 PROGRAMME	VENUE
7:00 AM	Arrival and Attendance Taking at Respective Polys & Travel to Desaru	<b>NYP</b> - Block E, Loading Area <b>NP</b> - NP Sports Complex <b>RP</b> - The Republic Cultural Centre <b>SP</b> - SP Convention Centre, ground (car park) level <b>TP</b> - Car Park E
11:30 AM	Deposit Luggage & Lunch	Sea View Dining Hall
1:30 PM	Admin Brief: Resort Orientation & House Rules	Lotus Ballroom
2:00 PM	Learning Journey for Groups GE & GR	Various Locations
2:00 PM	Discussion & Presentation Preparation for Groups SL & RF	<b>SL</b> : Sunflower Room <b>RF</b> : Thamarai Room
6:00 PM	Dinner Admin Brief: Day 5 Programme	Sea View Dining Hall Lotus Ballroom
7:30 PM	Room Check-In	Rooms
9:00 PM	Social Night & Peer Sharing Preparation	<b>GE</b> : Lotus Ballroom <b>GR</b> : Lian Hua Room <b>SL</b> : Sunflower Room <b>RF</b> : Thamarai Room
11:00 PM	End of Day 4 Programme - Lights Out	



D5

THURSDAY, 21 SEPTEMBER 2023

TIME	DAY 5 PROGRAMME	VENUE
7:00 AM	Breakfast	Sea View Dining Hall
8:00 AM	Admin Brief: Day 5 Programme	Lotus Ballroom
8:30 AM	Learning Journey for Groups SL & RF	Various Locations
8:30 AM	Discussion & Presentation Preparation for Groups GE & GR	<b>GE:</b> Lotus Ballroom <b>GR:</b> Lian Hua Room
12:30 PM	Lunch	Sea View Dining Hall
2:00 PM	Concurrent Peer Sharing Session to Poly Principals	<b>GE:</b> Lotus Ballroom <b>GR:</b> Lian Hua Room <b>SL:</b> Sunflower Room <b>RF:</b> Thamarai Room
5:00 PM	Group Photo Admin Brief: Return Journey	Lotus Ballroom
5:30 PM	Preparation for Social Night	Sea View Dining Hall
6:30 PM	Social Night	
10:00 PM	End of Social Night	
11:00 PM	End of Day 5 Programme - Lights Out	



D6

## FRIDAY, 22 SEPTEMBER 2023

TIME	DAY 6 PROGRAMME	VENUE
8:00 AM	Check Out & Luggage Deposit Breakfast	Lotus Ballroom Sea View Dining Hall
9:30 AM	Depart for Singapore	-
12:00 PM	Arrival at TP & Luggage Deposit	<b>GE:</b> Blk 22, Level 5, Rooms 128, 129, 130, 131 <b>GR:</b> Blk 22, Level 6, Rooms 153, 154, 155, 156 <b>SL:</b> Blk 18, Level 5, Rooms 85, 86, 87, 88 <b>RF:</b> Blk 18, Level 5, Rooms 106, 107, 108, 109
1:00 PM	Lunch & Consolidation of Reflection	TCC Foyer & Outside of TCC
3:45 PM	Admin Brief: Closing Ceremony	TCC
4:15 PM	All to be Seated	
4:30 PM	Closing Ceremony GOH: Minister Chan Chun Sing	
5:45 PM	End of Closing Ceremony & Dinner	TCC Foyer & Outside of TCC
7:15 PM	End of PF 2023 Luggage Collection & Dismissal	







# LEARNING JOURNEYS



## LEARNING JOURNEYS (SINGAPORE)

### GREEN ECONOMY

#### **Mandai Wildlife Reserve**

Peek into unconventional methods for protecting biodiversity during the construction of Mandai precinct. Through a guided tour of the stunning green spaces, learn about the sustainable features of Mandai Wildlife West.

#### **Siloso Beach Resort**

Learn about the closed-loop operations implemented at the hotel and the meticulous considerations taken to construct the establishment with a focus to promote eco-tourism.

#### **313 Somerset**

Explore the mall's sustainable practices, challenges met to encourage tenant participation and sustainable campaigns championed by the mall management to promote sustainability.

### GREEN RESOURCES

#### **Schneider Electric**

Gain insights to strategies and technology used to optimize building performance in a carbon neutral building which achieved the BCA Green Mark Platinum award.

#### **Carbon and Climate tour**

Learn about the types of carbon and their importance, and the sustainability features adopted by GBTB's Flower Dome through an indoor and outdoor tour.

#### **TP Centre of Excellence (Sustainability)**

Learn more about various sustainable energy resources harvested within the campus. The LJ will cover TP's Centre of Urban Sustainability, Green Building and BeyonDesign Centre.

#### **LTA Depot Tour**

Look behind the scene at how Singapore is greening its public transport network and learn the processes involved in ensuring the bus network runs safely, reliably and efficiently.

### SUSTAINABLE LIVING

#### **CREUSE**

Tour a local pallet manufacturing facility, and be introduced to the circular economy & sustainability by upcycling wooden waste.

#### **Decathlon**

Learn how the FMCG emphasize on recycling, zero waste and sustainable fashion practices with their eco design and campaign to give their products a second life.

#### **Cloop**

Learn circular fashion through upcycling and recycling clothes instead of committing to fast fashion.

#### **Housing Development Board**

Learn how Punggol Eco-Town was conceptualized and developed.

### RESILIENT FUTURE

#### **Edible Garden City**

Learn the history and importance of food security and how food provision can be sustained in Singapore.

#### **Urban Wetlands Tour**

Tour the urban wetlands that have been development at GBTB since 2020 and learn the importance of mangroves and if such urban wetlands could be replicated in a similar manner.

#### **Tindle**

Learn about the production process and the challenges faced in promoting sustainable consumption by producing plant-based chicken as an alternative meat.



LJ

## GROUP SCHEDULE

Group	18th September	19th September
GE 1	Mandai Wildlife Reserve	Siloso Beach Resort
GE 2	313@Somerset	Mandai Wildlife Reserve
GE 3	Mandai Wildlife Reserve	313@Somerset
GE 4	Siloso Beach Resort	Mandai Wildlife Reserve
GR 1	Schneider Electric	GBTB – Carbon and Climate Tour
GR 2	GBTB – Carbon and Climate Tour	Schneider Electric
GR 3	Schneider Electric	TP Centre of Excellence (Sustainability)
GR 4	LTA Depot Tour	Schneider Electric



LJ

## GROUP SCHEDULE

Group	18th September	19th September
SL 1	Cloop	CREUSE
SL 2	Decathlon	HDB – Punggol Eco Town
SL 3	HDB – Punggol Eco Town	Decathlon
SL 4	CREUSE	Cloop
RF 1	Edible Garden City	GBTB – Urban Wetlands
RF 2	Edible Garden City	Tindle
RF 3	GBTB – Urban Wetlands	Edible Garden City
RF 4	Tindle	Edible Garden City



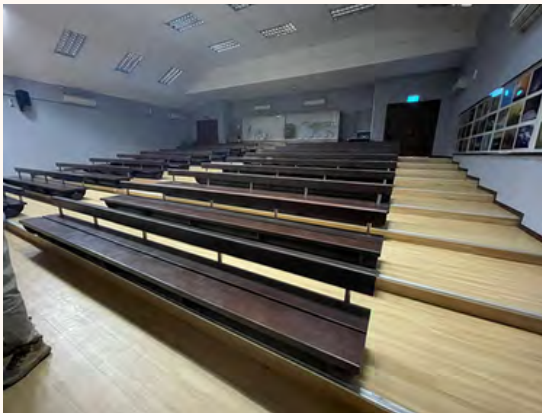
**GREEN ECONOMY****MANDAI WILDLIFE RESERVE (BIRD PARADISE)****Rationale:**

The learning journey allows students to discover how development in Mandai West was balanced with wildlife protection.

**Learning Outcomes:**

Participants will

- Experience an indoor session to understand the unconventional methods for biodiversity protection during the construction of the Mandai precinct.
- Go on a guided tour of the newly built Bird Paradise to learn about the sustainable features.



Introduction



Guided Tour of Bird Paradise

## GREEN ECONOMY

### 313 @ SOMERSET

#### Rationale:

The learning journey explores the sustainable practices adopted within the mall, the challenges met to encourage tenant participation, and sustainable campaigns championed by the mall management to promote sustainability.

#### Learning Outcomes:

Participants will

- Gain knowledge of 313@Somerset's waste management strategies, utilization of energy sources, and the implementation of effective water usage practices during the back-of-house tour.
- Learn about the conceptualization of the sustainability campaigns driven by the mall and the outcomes and responses of initiatives implemented.



Food Digester



Green Pillars



Solar Panels

## GREEN ECONOMY

### SILOSO BEACH RESORT

**Rationale:**

Siloso Beach Resort (SBR) is dedicated to fostering sustainability and promoting eco-tourism. This commitment is evident in its thoughtfully designed infrastructure, hotel environment, and operational practices. SBR provides a tangible example of how a profit-driven business can balance profit, planet, and people in its operations.

**Learning Outcomes:**

Participants will

- Observe how SBR seamlessly integrates the natural environment into its building design.
- Learn about the hotel's closed-loop operations when visiting the rooftop gardens and wormery.
- Learn how energy can be repurposed within the property, leading to environmental protection and reduction in carbon footprint.



Room Tour



Rooftop Gardens



Womery

## GREEN RESOURCES

### SCHNEIDER ELECTRIC

**Rationale:**

Schneider Electric is a global energy management and automation company that actively champions sustainability through various initiatives and practices. Schneider Electric has worked with numerous stakeholders such as government agencies to provide an integrated platform that enables customers to optimize energy usage, reduce waste, and enhance overall sustainability across various industries and sectors.

**Learning Outcomes:**

Participants will

- Understand the features of Schneider's products and services in the decarbonization of business operations.
- Learn how Schneider Electric has partnered with the government to provide support to SMEs to 'greenify' their operations.
- Experience Schneider's exclusive 'Ecostruxure' with real-time building monitoring and advisory capabilities.



Ecostruxure



Real-time building monitoring



**GREEN RESOURCES****GBTB-CARBON AND CLIMATE TOUR****Rationale:**

Students will learn about the different colours of carbon, carbon sources, and sinks as it moves through the environment and what this means for a climate that is changing while discovering the secrets to cutting carbon in the Gardens.

**Learning Outcomes:**

Participants will

- Gain a better understanding of the carbon sources and their respective colours on the carbon rainbow.
- Understand the different types of renewable energy sources harvested from various infrastructures at GBTB.
- Visit GBTB's Flower Dome to learn about the sustainable features implemented within their business operations.



Introduction to the Carbon  
Rainbow



Walking Tour at the  
Flower Dome



Bio-mass Plant

## GREEN RESOURCES

### TP CENTRE OF EXCELLENCE (SUSTAINABILITY)

**Rationale:**

Participants will embark on a learning journey to TP's own Centre of Urban Sustainability at the School of Applied Science, observe the use of sustainable energy sources in TP's day-to-day operations and visit the BeyonDesign Centre at the School of Design.

**Learning Outcomes:**

Participants will

- Gain first-hand insights into R&D thrusts of Solid Waste Management and Recycling for Strategic Building Materials, and Food Waste Reduction and Recycling.
- Understand sustainable efforts integrated within TP's daily operations.
- Understand the use of sustainable materials in the conceptualization of winning projects by design students within TP's BeyonDesign Centre.



Centre of Urban Sustainability



Triangular Gardens



BeyonDesign Centre

**GREEN RESOURCES****LTA DEPOT TOUR****Rationale:**

The learning journey highlights the evolution of the transport system in Singapore and how it has developed to support Singapore's economic growth and social needs. Participants will also learn how Singapore is greening its public transport network and the processes involved in ensuring efficient yet sustainable land transport.

**Learning Outcomes:**

Participants will

- Gain insights into the planning considerations aimed at benefitting commuters, communities, and the nation through public transport mapping.
- Understand the correlation between housing and connectivity in Singapore, elucidating how city planning envisions a sustainable living environment.
- Have the opportunity to ride in the new electric buses at the bus depot to experience first-hand the use of solar energy to power the vehicles.



LTA Depot



Singapore Mobility Gallery

## SUSTAINABLE LIVING

### CLOOP

**Rationale:**

The learning journey highlights the environmental impact associated with fast fashion consumption. The students will gain an understanding of the considerations involved in textile recycling, Cloop's outreach initiatives, and learn how they can live sustainably and be responsible consumers.

**Learning Outcomes:**

Participants will

- Understand the trend of textile recycling in Singapore over the past years.
- Gain insights into the challenges faced by Cloop as it endeavours to expand operations and enhance the accessibility of their recycling bins.
- Participate in a clothes sorting activity, which aims to shed light on the different ways clothes can be categorised for recycling/upcycling garments.



Introduction to Cloop



Shop Tour



Clothes Sorting Activity

**SUSTAINABLE LIVING****CREUSE****Rationale:**

CREUSE is a subsidiary of EXCEL Pte Ltd, a local pallet manufacturer. It champions recycling, upcycling and zero-waste initiatives in Singapore. Participants will understand the thought process in driving a circular economy and a global perspective of the manufacturing industry's role in these practices.

**Learning Outcomes:**

Participants will

- Understand the challenges encountered by a local business in the manufacturing industry focused on upcycling and achieving zero waste;
- Experience a factory tour that showcases the wood pallet recycling and upcycling process. The tour will also highlight the diverse practices adopted in Singapore and by the global players to attain sustainable operations in the manufacturing industry; and
- Participate in an activity by creating a handphone stand from upcycled wooden pallet, which they can bring home.



Introduction to Circular  
Economy



Factory Tour



Hands on Activity

## SUSTAINABLE LIVING

### HDB-PUNGGOL ECO-TOWN

**Rationale:**

Participants will embark on a specially curated learning journey featuring Singapore's first Eco-Town at Punggol, in collaboration with HDB. As participants walk through the neighbourhood, they will observe the deliberate efforts put in by various government agencies to allow residents to live and work in a sustainable manner. gain a comprehensive understanding of sustainable living by observing the interactions between various stakeholders and the neighbourhood.

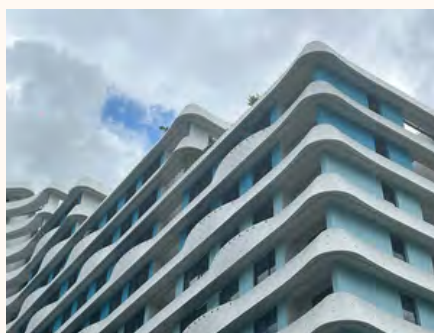
**Learning Outcomes:**

Participants will

- Learn about the development initiatives implemented by HDB and at Punggol Eco-Town.
- Understand the various factors and considerations of sustainable living.
- Observe and identify key stakeholders who collectively contribute to a suitable environment for sustainable living.



Punggol Discovery Cube



Waterway Terraces I



My Waterway @ Punggol

## SUSTAINABLE LIVING

### DECATHLON

**Rationale:**

The learning journey highlights the initiatives Decathlon is fronting to achieve sustainable fashion and lifestyle practices as the largest sporting goods retailer. Participants will be introduced to the diverse repair and recycling platforms offered in the store, while also gaining insights into Decathlon's ongoing efforts to achieve a 100% eco-designed fashion line.

**Learning Outcomes:**

Participants will

- Learn about the global initiatives by Decathlon and the outcomes from the implementation.
- Understand the transition process from a linear to a circular economy for an international sports retailer and its impact on business operations across countries.
- Discover how the various stakeholders within the fashion ecosystem collaborate and support one another to collectively strive toward sustainable fashion goals.



Introduction to Decathlon



Flagship Shop Tour and Activity

## RESILIENT FUTURE

### EDIBLE GARDEN CITY

#### Rationale:

The learning journey covers multiple concepts in food insecurity and sustainability, namely indoor and controlled environment farming methods, the importance of biodiversity, and soil health. It also brings perspectives on how Singapore is able to achieve food resilience based on historical data. Participants will learn about how they are able to participate in the ecosystem as individuals and as a community.

#### Learning Outcomes:

Participants will

- Learn about the local agriculture industry and the challenges Singapore looks to overcome – local and historic food resilience, economic competitiveness, and sustainability.
- Understand how our natural environment in biodiversity and soil health affects the quality of the plants.
- Have the opportunity to learn to pot and bring home their plant.



Introduction



War Time Garden



Microgreens



Biodiversity Garden



Potting Activity





## RESILIENT FUTURE

### URBAN WETLANDS TOUR

**Rationale:**

Participants will embark on an outdoor learning journey to learn about Gardens By The Bay's (GBTB) Kingfisher Urban Wetlands, which has been in development since 2021. The wetlands underpin a joint research study with NUS and Temasek Holdings to determine if similar urban wetlands can be used as a nature-based solution to affect carbon sequestration.

**Learning Outcomes:**

Participants will

- Learn about the development and biodiversity of the Kingfisher Urban Wetlands.
- Learn about the concept behind its design and the role of urban wetlands in the face of climate change.
- Explore the possible future implementations of similar wetlands around Singapore or similar urban spaces in the near future.



Introduction



Kingfisher Wetlands



Nature's Interaction

## RESILIENT FUTURE

### TINDLE

**Rationale:**

Participants will observe the production process and the challenges Tindle faces in promoting sustainable consumption by producing plant-based chicken as an alternative meat.

**Learning Outcomes:**

Participants will

- Learn how Tindle adds value and supports Singapore's journey towards becoming a hub for innovation, fostering sustainable living in the future.
- Learn about the process of plant-based production using an extruder.
- Understand how students in the respective domains can play a part in the industry.
- Have the opportunity to taste test the food products.



Introduction



Food Tasting

## LEARNING JOURNEYS (DESARU, MALAYSIA)

### PROGRAMME OUTLINE (WEDNESDAY)

Time	GE	GR
2:00 PM	Desaru Fruit Farm	Mangrove Tour
4:00 PM	Mangrove Tour	Desaru Fruit Farm
6:00 PM	Back at Hotel	

### PROGRAMME OUTLINE (THURSDAY)

Time	SL	RF
8:30 AM	Desaru Fruit Farm	Mangrove Tour
10:30 AM	Mangrove Tour	Desaru Fruit Farm
12:00 PM	Back at Hotel	



## LEARNING JOURNEYS (DESARU, MALAYSIA)

### DESARU FRUIT FARM

**Rationale:**

Participants will get to appreciate the sustainability practices implemented between farms in Malaysia and Singapore, enabling them to observe and analyse the difference in green initiatives embraced by both countries. Students will also gain insights into the constraints and obstacles associated with traditional farm production methods.

**Learning Outcomes:**

Participants will

- Gain knowledge about the inherent circular economy established within the ecosystem.
- Develop an understanding of the integrated bio-farming systems implemented by the farm, which avoids the use of chemicals (natural pollination/methods of preventing pests infestation).
- Have the opportunity to bring back a packet of fruits to taste test.



Introduction



Kingfisher Wetlands



Nature's Interaction

## LEARNING JOURNEYS (DESARU, MALAYSIA)

### MANGROVE TOUR

**Rationale:**

Participants will acquire knowledge about the inherent sustainability of natural systems compared to man-made ones. This learning journey aims to foster an understanding of the significance of conservation and the multitude of positive effects it yields when we prioritize the protection of our planet.

**Learning Outcomes:**

Participants will

- Embark on a riverboat ride to gain insights into the vital role of mangroves in safeguarding shorelines, supporting diverse wildlife, and preserving the health of the ocean.
- Explore the types of root systems and discover the pivotal role they play in maintaining the balance of the ecosystem.
- Understand the relationship between humans and mangroves through a visit to a fishing village.



Boat Tour through the Mangrove



Learn about the purpose of mangroves to the fishing village





# SPEAKERS & PANELISTS



**MS GRACE FU HAI YIEN**



Minister for Sustainability and  
the Environment

Guest of Honour

Opening Ceremony  
15 September 2023

**MR CHAN CHUN SING**



Minister for Education

Guest of Honour

Closing Ceremony  
22 September 2023



## PANEL 1: TOWARDS A NET ZERO ECONOMY

### GREEN ECONOMY & GREEN RESOURCES

This panel discusses the significance of a net zero economy with the following:

1. Promoting sustainable economic growth for Singapore and achieving full and productive employment for all.
2. Creating job opportunities in sustainability.
3. Having a decent living wage/ income while contributing directly towards achieving sustainable development goals.

### PROGRAMME OUTLINE

Time	Activity
2:00 PM	Sharing by Speakers
2:30 PM	Q & A Session
3:15 PM	Presentation of Token of Appreciation
3:25 PM	Tea Break & Interaction with Panelists

## PANEL 1: TOWARDS A NET ZERO ECONOMY

### GREEN ECONOMY & GREEN RESOURCES



Ms Tan Mei Ping, Vice President  
Group Corporate Sustainability Office,  
United Overseas Bank

Mei Ping has more than 10 years of working experience in a financial institution, public sector and global technology companies. She is an experienced sustainability professional in the areas of sustainable finance, corporate sustainability, policies and regulations as well as sustainable technologies.

At her current role at UOB Group Corporate Sustainability Office, she works with various business functions to identify and manage ESG risks and opportunities, including supporting the bank in delivering a net zero future.

Prior to this, she closely engaged small and medium-size enterprises (SMEs) to integrate sustainability in their business operations and develop sustainable solutions through programmes and initiatives.

She holds a MPhil's degree in Engineering for Sustainable Development from University of Cambridge and a Bachelor's degree in Electrical Engineering from Korea University.

## PANEL 1: TOWARDS A NET ZERO ECONOMY

### GREEN ECONOMY & GREEN RESOURCES



Mr Jackson Seng, Vice President  
Strategy and Business Development  
East Asian Region, Schneider Electric

Jackson has more than 20 years of regional experience in multiple leadership roles in areas such as strategy, business development, sales, marketing, services, engineering, project management, and commercial operations.

Jackson is currently the Vice President of Strategy and Business Development for the East Asia region. In his role, he leads a team to drive long term business strategy development and deployment.

He is developing a strong collaboration with the senior management team and external partners to ensure the successful implementation of strategic initiatives. Sustainability is an integral part of long-term strategy and partnering with customers to achieve their environmental sustainability commitment (ESG, science-based targets, CDP, UN SDP etc) with renewable energy PPA, RECs, and microgrid solutions remains a high priority.

Jackson has a great understanding of multi-national companies' environments, and he is quick to adapt to different working cultures. He also acquired knowledge in automation, power generation, power distribution, sustainable development, and energy efficiency from his diverse working experience.

Jackson graduated as an electrical engineer from Nanyang Technological University (NTU). He also obtained an MSc in Power Engineering from the National University of Singapore (NUS), an MBA from the University of Nottingham (UoN), and an Advanced Certificate in Sustainability and Sustainable Business from Singapore Management University (SMU).



## PANEL 1: TOWARDS A NET ZERO ECONOMY

### GREEN ECONOMY & GREEN RESOURCES



Dr S. Viswanathan  
Director, Centre for Business  
Sustainability  
Cluster Director, Energy Research  
Institute  
Nanyang Technological University

Dr S. Viswanathan (Vish) is a Professor of Operations and Corporate Sustainability at the Nanyang Business School, Nanyang Technological University (NTU), Singapore. He is also the Director of the Centre for Business Sustainability, Cluster Director at Energy Research Institute@NTU (ERI@N), and Program Director of the soon-to-be-launched Executive MSc in Sustainability Management.

His research interests include Corporate Sustainability, Energy Modelling, LCA, and Supply Chain Systems. His research has been published in the University of Texas Dallas (UTD) ranked among top Business journals.

He is currently working on several sustainability related NRF grant projects such as “Singapore’s Pathway to Carbon Neutrality: Analysis of New Technologies”. He teaches Corporate Sustainability in many Graduate and Executive Programs at NTU.

## PANEL 2: TRANSFORMING SINGAPORE INTO A LIVEABLE AND RESILIENT CITY

### SUSTAINABLE LIVING & RESILIENT FUTURE

This panel will discuss the following:

1. Suggesting how their practices could impact Singapore and its social compact.
2. Evaluating the effectiveness of sustainable living practices in their respective field.
3. Providing possible solutions that Singapore and individuals could take to create an impact in sustainability.

### PROGRAMME OUTLINE

Time	Activity
2:00 PM	Sharing by Speakers
2:30 PM	Q & A Session
3:15 PM	Presentation of Token of Appreciation
3:25 PM	Tea Break & Interaction with Panelists

## PANEL 2: TRANSFORMING SINGAPORE INTO A LIVEABLE AND RESILIENT CITY

### SUSTAINABLE LIVING & RESILIENT FUTURE



Mr Heru Santoso Soedarsono  
Director, Smart & Sustainability Research  
Housing & Development Board

Heru has vast experience in the area of research and development to bring about implementation of innovative solutions for greater sustainability in Singapore's public housing.

He is currently the Director of Smart and Sustainability Research overseeing new research focus areas in sustainability, urban resilience, liveability and social behavioural science for the Built Environment, test bedding and implementation of new smart and sustainable ideas/concepts. Some examples are sensors deployment, AI, digital platforms, smart enabled homes, HDB Smart Hub etc. and new science & technology capabilities in the area of micro climate science, urban & complex system modelling and advanced urban analytics.

He is also driving the large-scale deployment of smart and sustainable solutions under the HDB Green Town programme to improve sustainability and liveability of existing HDB towns in support of the Singapore Green Plan 2030.

## PANEL 2: TRANSFORMING SINGAPORE INTO A LIVEABLE AND RESILIENT CITY

### SUSTAINABLE LIVING & RESILIENT FUTURE



Mr Ivan Ng  
Chief Technology Officer  
City Developments Limited

Ivan Ng is the Chief Technology Officer of City Developments Limited, a global real estate leader operating across 29 countries. He is responsible for Group IT, Digital Initiatives, and Technology Risks Governance. With 25 years of leading both businesses and technology teams, Ivan brings unique insights into the innovative use of technologies to create business value and drive positive change in environmental stewardship through sustainability-focused innovations.

Ivan was the Regional Managing Director for ServiceNow, where he established their Greater China and Southeast Asia businesses, and Chief Technology Officer for Pactera, a Nasdaq-listed IT services company.

Currently based in Singapore, he has spent over 15 years working in China, the US, Japan, Indonesia, and Thailand. Ivan is currently the President of the IT Management Association (Singapore) and serves on the boards of technology companies. He is an advisor to Temasek Polytechnic, the National University of Singapore, and Singapore Gardens by The Bay. Ivan was conferred the Outstanding Alumni Award by the National University of Singapore in 2018.



## **PANEL 2: TRANSFORMING SINGAPORE INTO A LIVEABLE AND RESILIENT CITY**

### **SUSTAINABLE LIVING & RESILIENT FUTURE**



Mr Jacky Yau  
Head of Commercial & Special Projects  
Edible Garden City

With extensive experience working across both the private and public sectors, Jacky has experience in both advising executive leadership and implementing change in his previous career as a management consultant in Australia, and as a leader within Edible Garden City.

Jacky is motivated by the importance and inspired by the potential impact of contributing to food resilience in Singapore through individual action.

Jacky currently leads the team that works closely with schools (ranging from Primary level to University) to bring students' closer to their food source and learn about EGC's approaches to managing challenges in the local agriculture industry and the variety of the challenges Singapore looks to overcome (e.g. local & historic food resilience, economic competitiveness, and sustainability).



## PANEL 2: TRANSFORMING SINGAPORE INTO A LIVEABLE AND RESILIENT CITY

### SUSTAINABLE LIVING & RESILIENT FUTURE



Ms Jasmine Tuan  
Co-Founder, Cloop  
Associate Marketing Director at Zero Waste  
Singapore

Jasmine Tuan is the founder of clothes swap organization, Cloop and Associate Marketing Director at Zero Waste Singapore.

As a self-confessed fashion addict, she's a second-hand advocate that's learnt to love living with less and has found inner peace through decluttering her life and of all things non-essential.

## OPENING AND CLOSING PERFORMANCES

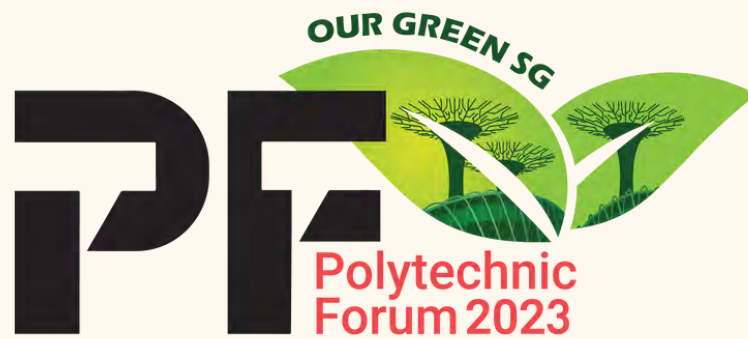
### SYNOPSIS

The ideations for Temasek Arts Centre's performances emerge from themes surrounding sustainability - the planet, economies, people, society, the environment and the future. They are based on the concepts of "Rhythm" and "Voice".



In the opening performance, "Rhythm", we consider the passing of time and seasons, heartbeats being in sync and the pulse of the earth. The item features a collaboration of the very best of our music percussion and cultural dance groups. Be captivated by the sounds of Salvo Drums, Dikir Barat, Fusion Percussion, Chinese Orchestra, Band, Indian and Malay Dance Groups.

The closing performance, "Voice", aims to resound with the students' journey and development over the time spent at the Forum. It seeks to reflect the notions of reaching a new perspective, communication and being in harmony. Featuring more than 35 performers from 6 different Arts groups, the piece explores the subject of making unknown voices heard and pertinent issues known.



# GROUPS & FACILITATORS



## GREEN ECONOMY

GE1 (Adrian Lim Li Lai - NP)	
Poly	Name
TP	CHIA YONG EN
	VALERIE CHONG
	CHOW HORNG YANG
	AKMAL HAKIM BIN FADHIL
	JANELL FONG CHEOK HUI
	JAVEN GOH
SP	DEXTER YAP ZHE KAI
	NG KEE LOK KEVELLE
	OLIVIA MAE TERENCE
	CHAN ZHEN YEAN
	LOW RUI XI CLARISSA
	KELLY TAN JIA WEI
	CELESTINE KHO SHOU YIN
RP	JAGPREET KAUR RIKHRAJ
	ELLEAN TSEN MEI QI
	TEO HUI QI
	TAN WEI JUN, RYAN
	GERI NEO
	LEE JINKANG, CEDRIC
	LEVAN LIM YONG HAN
NYP	BOO KYRON
	YEW YING QI
	KATHIR S/O JAGATHISAN
	HO JIA HUI GRACIA
	YEE ZHI YU
	TAY JO-LYNN
NP	AZMAN SARAH SOFIYA
	BHATTACHARJEE MEGHA
	CEPHAS CHEW
	CHAN CHARMAINE
	CHENG JIH KIT IAN
	CHIN CHUN WAI
<b>Total: 32</b>	

GE2 (Seow Josefina - RP)	
Poly	Name
TP	CHONG HUI-EN CASSIA JOCHEBED
	KEK KAI YANG
	CHLOE KOH HUI RU
	LEE MING KUANG BENJAMIN
	THEODORA LEE BING TING
	LEK HUI YI CLARISSA
	JOE NAVEEN
SP	CHONG QI HUI SAMUEL
	KWEK CHENG EN ERNST
	ABREE WONG XIN HUI
	KHO KAI XIN
	ALICIA SONG EN XI
RP	TAN YAN ENG BERISSA
	XAVIER ONG YI XUAN
	TRICIA OW EN CI
	TAN YI JING
	LEE ZHUO HENG, BRANDON
	LIM HU JIANG KEVIN
NYP	PHUA JUN XI, JERIC
	CHEW JUN-YU JARRETT
	CHONG PEI QI
	SIMRAN ISHWERDAS LALLCHAND
	GOH YU XUAN
	ANG KAITLYNN
NP	KAM KAI TING, MELODY
	CHANG JING WEN
	CHANG WEN WEI CLARRIE
	CHEN ZHIQIAN
	CHONG ZHE RONG KEENE
	EZEKIEL CELESTE PRIYA
	LEE JUN WEI
LIM WEN LE	
<b>Total: 32</b>	



## GREEN ECONOMY

<b>GE3 (Hengky Chang - NYP)</b>	
<b>Poly</b>	<b>Name</b>
TP	FILZA ALISHA BINTE JEFFREY ABDULLAH
	HANNAH LIU SHU JUN
	JOLIN LOW XIN YU
	SIONG KAI LE
	TAN KENG HAO, LUKE
	TEO RUI HANG, ETHAN
SP	JUSTIN LEE RONG HUI
	SNG CHENG HOW
	TRAVIS FOO XIUQI
	NUR QISTINA BINTE SALIM
	SARVENDRAN SELVARAJ
	CHOO MAE GIN
RP	KOK KAI EN
	CALEB LEONG JUN JIE
	PRIYAL PREETI SIVABALAN
	CHAE NI PANG XIN TING
	TOH KHENG SEN, JAYDEN
	WONG YOKE SHAN BRIDGET
NYP	SIM SHENG HAO
	ZEPHYR JUDE YEO
	WEE JUN CAI, BRANDON
	KUICK AN KIAT TYLER
	DYLAN WONG CHOON KEAT
	VIVIENNE LIANG JUN NING
NP	VIOLA OLIVIA LENG BERGE
	HENG XIAO TING
	KANG XIN YA VANESSA
	LIM ELIZABETH
	SETH TAN
	ZEA SIEGA TORRES
<b>Total: 30</b>	

<b>GE4 (Erwin Merijn Wouterson - SP)</b>	
<b>Poly</b>	<b>Name</b>
TP	NUR SYAHIRAH BINTI MUHAMMAD FAUZI
	ANDREA PEH EN XI
	TAN WERN HUI
	THAM KENG CONG
	TAN WEI JIE TRISTAN
	YANG XIZHE
SP	ANSEL FOO JIA JUN
	SAMUEL ONG WEI BEN
	GOH RUI ZHUO
	ONG JOVIER
	SENG ENHUI CHLOE
	PHOEBE TOK XIN XI
RP	NUR AFIQAH BINTE ABDUL SAMAD
	SUN QUAN ADRIAN-CEDRIC
	TAN JIA YI CHARMAIN
	TAN SI JIA
	AMANDA WANLI SYAHRIR
	WONG JUN HAN, DAMIEN
NYP	OLFSEN VALONES
	KWA YU QUAN
	LIEW ZHENG RONG, SEAMUS
	HUGH GOH ZHI JIN
	JASE LIM SHENG XIANG
	KIERAN HAN JEN-ON
NP	LIM EN QI JOANN
	LOH QI HUI EVANGELINE
	LOKE LAGU
	SI BONG TENG DANIELLE
	WONG SI WAI CALISTA
	YEO JING NI KYLIE
	YEW JING WEN VERNICE
<b>Total: 31</b>	



## GREEN RESOURCES

<b>GR1 (Akasta Sinaga - NP)</b>	
Poly	Name
TP	CHAN KENG HO
	NATHANIEL CHAN SHAU EN
	CHAN YI XIN
	HENG JUN RUI
	LEOW YU XUAN VALENCIA
	PHUA WOON YEE
SP	BERNAL ANDREA MELISSA PATOC
	CHAN KENG YEOW
	SYBIL LIM SHI EN
	LU JING XUAN
	ANG WEI XIANG
	TAY YU JIE
RP	CLARENCE CHOONG ZHI YEN
	CHRISTAL KUAN JING YI
	RAJASEKARAN KRITIKA
	YONG KAI SHENG KELSON
	TAN LIANG SHENG
	TAN JI DONG EUGENE
NYP	SITI NUR KHADIJAH BINTE MOHAMAD SHARIFF
	TANG KAI XUE
	TONG EE SON
	TESMOND SIA JIA JIN
	S V VEDHAVHARSHINI
	WAN MUHAMMAD NAJMUDDIN BIN WAN NASARUDIN
NP	P ANUPRIYA A PANNEERSELVAN
	GWENDOLYN LOH RUI EN
	ARASH NUR IMAN MOHD ALI SHAIFUDDIN
	CHIANG RUIQIAN
	GOH YU TING ASHLEY
	LEW YU XUAN ETHAN
	LIU YUXUAN
	MOOKONI ABHIJITH
<b>Total: 32</b>	

<b>GR2 (Chia Chew Lin - SP)</b>	
Poly	Name
TP	MUHAMMAD 'ISA B ANUAR
	RAYSHON LEONG KAI QUAN
	LIM XU CONG
	FELICIA NG WEI HAN
	NGAU WEE AN ERNEST
	QUEK YIRU
SP	SIM WEN XI AGNES
	RILEY KANG
	LIM WAI MUN BRENDA
	TAN ZNG HIONG
	SOH TIAN YIN
	HO YU XIAN CLARENCE
RP	ONG KAI LE ISAAC
	NUR SHAHRINA DANILLA BINTE SHAHRUDIN
	CHUA YUKI
	NIKKHODA TAN ZHENG KAI
	MARCUS CHIAM TAT HSENG
	LEE JI AN
NYP	CHEE ATLAS
	RAYDEN LEAU TIAN EN
	ISAAC WONG ZI YANG
	NUR ALYSHA BINTE MOHAMED NOH
	SHAAVINRAO S/O SANDRAN
	CHIOK YIXIN
NP	JUSTIN WONG KIN FONG
	THEOPHILA TAN
	KOH JIA EN
	ONG ZI JIAN
	TAN HAO MING NICHOLAS
	TAN SIN LEE JANICE
	TAN SWEE EN
	LIM JEN WEN
<b>Total: 32</b>	



## GREEN RESOURCES

<b>GR3 (Foo Yong Wee - NYP)</b>	
Poly	Name
TP	ANDRES SIM
	SONG HAoyAN
	SONG ZHI YING GILLIAN
	AHMAD AFIQ IRFAN BIN SULAIMAN
	ELIS TAN SI QI
SP	ISABELLE ANN NG KAI LIN
	MISHEL MARYAM BINTE NASIR
	CHIENG YAN HENG KAYVEN
	JONATHAN CHUA JIE XIN
	WAIZ ZUL'MATEEN BIN MOHAMAD YUSRI
RP	CHIN YAN KANG ELLIOT
	QUEENA ANDITA NATHIFA KHANSA
	ONG XIN YI
	NUR ELLY AYUMI BINTE NORSUASTA
	YEO RUI KANG JOSH
NYP	MUHAMMAD RIZKIE BIN HAZMIR
	MOHAMED ASHRAF KHAN S/O MOHAMED ZAMEER KHAN
	ONG WEE KENG
	BRYAN TURANGAN
	KAI HO
NP	GRATIO CANDID WAHYUDINATA
	NURIN QHAIREENA BINTE ABDUL RAZAK
	TEO MIN RUO
	TAN QIN LI
	TEO JOLEEN
NP	OH WAN YING ERINA
	ONG CHENG BOON PERREN
	PU EN QI ADALIA
	QUEK BOON SIANG FELIX
	SOONG YU JIE VERNON
<b>Total: 30</b>	

<b>GR4 (Rabiah Binte Mohamed Dawood - RP)</b>	
Poly	Name
TP	TAN YOU QUAN, BERNON
	SYED ALWI BIN SYED AHMAD ALHABSHEE
	TAN SHAO KIAT, XAVIER
	TAN YI NING CHARLOTTE
	JOANNE TEO CUI EN
SP	SAMUEL WONG XIN LIANG
	YONG SHI JUN
	ASHLEY TAN MIN YEE
	TAN WEI SHAN
	ONG KAI YING ELIS
RP	NIKHIL MANU
	MOHAMED ZAFFRUL BIN MOHAMED ZAHREN
	TUNG YUH XUENG
	LEE PEI SAN SELINA
	SOH EN XIN GARYLLEA
NYP	TAN CHANG ZE
	HARIS MOHD ASH'ARI
	DANIAL HAIDER CHOWDHURY
	ANDREA THAM WENQI
	CHRISTIAN JOHNATHAN NG CHEE MUN
NP	LIM JING KHAI
	DYLIS FOON CAIRO
	CHAN CHANG JUN
	CLAIRE TAN YING
	LOW SHI PENG
NP	SAINI MUHAMMAD HAZIQ
	SEE YI KHER CLAIRE
	SIM YI HENG FELICIA
	TAN WEI ZE DARON
	TAN ZHI KANG SEAN
<b>Total: 31</b>	



## SUSTAINABLE LIVING

SL1 (Loh Yeok Ling (Belinda) - NYP)	
Poly	Name
TP	ANG YASHI, AMANDA
	BOO MAN QI
	CHEOK EN QI NICOLE
	KENNY CHIA SEN HONG
	TERENCE CHIN YUAN KAI
	SERPHINE LAU SU FANG
SP	CHIA HOI IAN
	GOH JUN HUI
	KONG KAR YOKE JADE
	PHUA MINYI ALEXIS
	HO YAN XI
	MANAV SINGH SARAN
RP	PRESHA RANI SUGUMARAN
	SALSABEEL BINTE MOHAMAD HISAM
	YAP PEI XIN
	DAYAN YEE JIA LE
	MUTHURASU SANTTHOSH
	MUHAMMAD DANISH ONG BIN ABU AHMAD
NYP	CRYSTAL LEE
	TEOH EN XUAN
	JASMINE ONG YI MIN
	CHLOE NG YUN SHAN
	SIEW WEI HENG
	BRANDON CHEN JIANYU
NP	AU YI DE
	CHAN YI NING AMANDA
	CHEANG LI XUAN SHERMAINE
	CHUA JIA YING CHARLENE
	EVAN CHEW
	GOH BLISS JOVIAL
<b>Total: 30</b>	

SL2 (Melvin Gan - NP)	
Poly	Name
TP	CHONG CHI HOONG
	ASHTON HO JUN HUI
	CHLOE LEE JING XI
	LIM FANG YI JUSTIN
	NUR SYAZANA BINTE MAHMUDDIN
	EFFA JEZLYNN BINTE MOHAMED EDERIS
SP	DARIUS LEE
	NICOLE TAY YE EN
	CHAN SI YI
	SHANEEZ ELISYA ADRIYANNA BINTE SHAHRIMAN
	LIAN WEN TING
	THAMAS TAN GUAN KIAT
RP	KOK ZI XUAN
	EU SHUE NENG, SHERYL
	GOH EN LING, ADDLIN
	BARUNNI D/O JEGAN KANTH NAIDU
	ZANN TAY YUAN HAO
	DARWISY ANEEQ BIN SHAHARUDIN
NYP	CHONG JIA RUI
	MOHANAN NIVEDHA
	JERI ONG XIN HUI
	ARIEL POH EN LIN
	NAVIN UMETSU MIRCHANDANI
	LEE KIAT HENG
NP	LEAL KASIUS ERICK LARGA
	GREGORY LEE XIANG SHENG
	HENG YU HNG PRESTON
	LAVERNE KOSASIH
	LEE TDZE ING SHANIA
	LI JINGJING
LIM MIN HUI STEPHENIE	
ONG WEI ZHENG BELDEN	
<b>Total: 32</b>	





## SUSTAINABLE LIVING

SL3 (Siti Hamimah Binte Abd Hamid - RP)	
Poly	Name
TP	MUHAMMAD FOUZY BIN MD AMIN
	MOHAMMED AQIL SYAHMI BIN MOHAMED AYUB
	POH WEE TIONG
	SECK HUI EN VICTORIA
	SIM WEN XUAN, RACHEL
	TEO HUI JIE ANNE
	TEO JIA NING, PHOEBE
SP	GAN RUI YIN
	ONG JING
	TAN JIE EN ARIEL
	BRYANN TEO
	SCOTT CHIA CHENG ZEE
	LEONG LI JET
	THI RI THANT
RP	TAARA GRACE
	ARIELLE NUR SHAFIQA BINTE SHAFARIZAL
	CHAN XIN KAI, GWYNETH
	BERNICE HING EN QI
	LOH JING YAO
NYP	FOO WEN QI
	JASMINE CHONG JIN HUI
	FOO HUI LIN
	TEE WEN QI
	ABDUR RAQIB BIN DANIAL ABDULLAH
	TAN MIN ZHENG
NP	LOH XIN RONG
	SEAN YEW JUN CHI
	SEE WEI SHAN
	SOON PHAIK YI ESTHER
	TAN JING XUAN CARRISSA
	TEH BOON HAO
	TIFFANY TEH KAR EN
<b>Total: 32</b>	

SL4 (Jeremy Tan - SP)	
Poly	Name
TP	HARUN IBRAHIM B MOHAMED MYDEEN
	MURUGESAN MURALIKRISHNAN
	SIOW WEI XIAN
	TAN YAN RUI, DESHAUN
	SHARLENE TEO JIA LI
	WEE JIA LING
SP	NUR ALYA MARSYA BINTE AZMY
	LEE KE TING
	JOYCE CHEW SHI YING
	SHANNON HAN XIN TIAN
	CHEN YUN-TING
	OCAMPO RAINELLE YANA COMIA
RP	NUR AMALINA BTE FARDANSHAH
	CHAN TZE TENG, VIENNA
	SHANE CHAN JINSHENG
	ZHUO YI XIN, ASHLEY
	NUR SYAHIRAH BINTE RUKAIMI
	SEMANTHA WONG SUETNI
	MILLENNIUM TAN
ANTHEA TAN TONG XI	
NYP	CHAN JING RONG
	MARISSA LIM LI SHUEN
	EDITH LOW KIA
	LOO XIANG JUN
	PANG SHIH CHING
	HUANG JUNXI
NP	TOH JIA EN
	TRISTA TAN XUAN YUN
	VIJITHARAN PRANAV
	YANG HAI
	YAP YAU AN SHAUN
<b>Total: 31</b>	



## RESILIENT FUTURE

RF1 (Tan Pang Wei - NYP)	
Poly	Name
TP	IRADAH BINTE ABU BAKAR
	ANG ZHI YI
	NATALIE CHAN YING TING
	CALEB GAN YEW EN
	HO ZHI YI
	HO CHENG JUN DARYL
SP	TEO JUN ZHI
	ABDULLAH BIN ZAINAL
	LECK YONG SENG
	TAN LIP JING
	WAN LUCIA
	CELINE CHAN
RP	NADHRAH ADILAH BINTE NOORIZAM
	SUA SHAO LONG SHAWN
	LEOW ZI XUAN ISABELLA
	ONG ZI XUAN, GIN
	GOH JUN HUI
	SHASMEEN BANU BINTE AYOOB MARICAN
NYP	OH WEN XUAN, FLORENCE
	MOHAMAD FARHAN BIN MOHAMAD HANAFFI
	TAY EMBER
	CHUA LI YI
	ZEUS KI'ERN ONG
	MOHAMAD ISKANDAR BIN MOHAMAD
NP	AO IEONG HUNG XING
	BONG SHI QING SARAH
	CHNG JIA EN NATALIE
	CHONG SHIH HANN SARAH GRACE
	DUCRO IAN GERARD
	KUAN JUN KANG KENZO
<b>Total: 30</b>	

RF2 (Mariam - NP)	
Poly	Name
TP	CHEN WEITING
	PUTRA MOHAMAD IRFAN BIN MOHAMAD RAZIB
	KANG SHAO JIE
	LIM RUI XUAN, LECIA
	LIM ZHENG YANG
	LOH CHENG EN, TAMMY
SP	MUHAMMAD KHALEEQ BIN KHAIRIL ANWARI
	WONG JIA MIN ALICIA
	WONG SHAO RONG JOEL
	BERNYCE LENG KIT YEN (LIAN JIE'EN)
	LIM XUE WEI JACE
	PANG CHING TIM (PANG JINGXIN)
RP	CHUA JIE YU, JAVIER
	SAFIN KHAN
	LAU EN CI CLAIRRE
	ASHLEY SOH XIAO TING
	RYAL QUSYAIRI BIN MOHD ZAIDI
	MELODY GOH XIN YING
NYP	ABIGAIL ONG
	PREETI D/O NIRANJAN MANDALIA
	SURIANA BINTE ROSLAN
	SARAH HENG JAN YE
	PHANG JIN XIAN
	LEW MIN HAN
NP	CHONG JIA SHUO
	CHUA WAN QIAN RACHEL
	GO MARCELA JASHINTA
	HO YUAN XUAN SHAINA
	HUEY IAN JAY REGINALD TAN
	JEN SHI EN ALICIA
	NG YONG MING RUSSELL
	ONG CHENG EN DESMOND
<b>Total: 32</b>	



## RESILIENT FUTURE

<b>RF3 (Leong Yihui - RP)</b>	
Poly	Name
TP	JUSTUS LOW
	LOW JIA YU
	VERA NG TZE TING (WU ZITING)
	NG SZE HWEE ALEXIS
	PECK QI HUI, CHERYL
	GERALDINE SIM YIHUI
	TAY WEI DE
SP	LEOW HAN RONG CLIFTON
	CHUA XIN YI KRISTY
	YAP YEN LING
	ERIKA LEE EN HUI
	MUHAMMAD RAYYAN BIN MUHAMMAD RAZALI
	CHAN ZHENG RONG RAYDEN
	WANG RUI XIN CLARIUS
RP	HUANG WAN XIN
	PEH YING XUAN
	SIEW MENG FONG
	NG LE YOUNG
	POH BEE BEE, JOY
	CHEW YU HOU
NYP	MAHALIK AMISHA ALAMA
	YANG YAN TING SHERNYSE
	YUVENIDTH GERALD
	TAN WEI HENG
	SAFIA NABILA BINTE MOHAMMED SHABIRIN
	FOO SZE LYN JANE
	LIM YONG CHUN
NP	JUAY YUN XIN
	LIM HUIJUN
	TAN YU XI
	TANG KAI EN
	TAY MARCUS
<b>Total: 32</b>	

<b>RF4 (Cyrine D/O Antony Joosa - SP)</b>	
Poly	Name
TP	KUEH WEI ZHE JACOLM
	PARIS TAN WAN LIN
	TAY SWEE MIN, SIMONE
	YAO YUTONG
	SANDREA YEE
	YONG REI ERN ESTHER
SP	ZIV KOH
	LIM ZE KAI
	LUO XINGHAO
	GAN SIM RU DAYNA
	CHAN YU FENG HOWELL
	HAN XIN YING CONSTANCE
RP	SHANMUGA SUNDARAM SRIJAN
	TAN YIT YEW
	ANGEL TEE XYN PYN
	RIDDIAN CHUA JIA JUN
	JOHN CHARBEL TAN
	TEE KAI LE
NYP	ANG PENG XIANG, ELVIN
	LOW YU XUAN
	MIZA FARZANA BINTI MOHAMED FAZIL
	MEENAKSHISUNDARAM KAVIYA
	KEE ANYIE
NP	ZHOU DING XUN
	TEO KYLIE
	VIKRAN B
	YAZHINI SANDRA
	SIAU YI WEI DARREN
	SUHAIDI DHANIYAH AQILAH
	YEO ZI HUI CHLOE
YIP TIN SI	
<b>Total: 31</b>	



### FORUM ETIQUETTE

Be respectful at all times:

- Attire and appearance should reflect your regard for yourself, your institution, and your country.
- Behaviour should be orderly and respectful of persons, property, and the public.
- Communication should be clear, concise, and considerate of the audience.

Forum Attire:

- Day 1 - Wear your Polytechnic T-shirt
- Day 2 - Wear PF23 Grey T-shirt
- Day 3 - Wear your Polytechnic T-shirt
- Day 4 - Wear your Polytechnic T-shirt and report at your poly for departure to Desaru
- Day 5 - Wear PF23 Royal blue T-shirt
- Day 6 - Wear PF23 Polo for Closing Ceremony

### THINGS TO BRING

- Day 1 to Day 6 - Water bottle (1 litre), laptop, and writing materials
- Day 2 to Day 5 - Day bag for the learning journey, refer to the LJ Pack List
- Day 4 to Day 5 - Refer to the overseas Pack List





## USER GUIDE FOR CONNECTING TO TP-SURF

### Self-Registration Portal for Guests

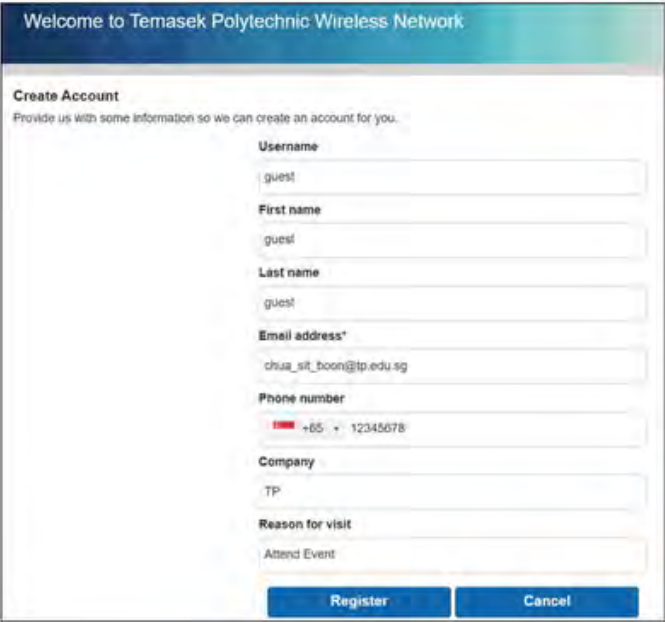
Steps for Self-Registration:

1. Turn on Wi-Fi for mobile device.
2. Connect to TP-SURF.
3. Click on “Don’t have an account?”.





4. Fill in the required fields for the registration.
- Username
  - First Name
  - Last Name
  - Email Address\*
  - Phone Number
  - Company
  - Reason for visit
- \* This is mandatory

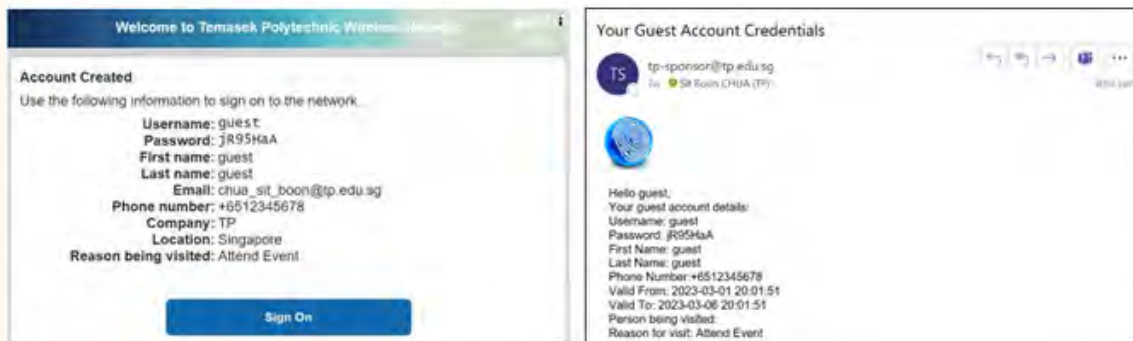



## USER GUIDE FOR CONNECTING TO TP-SURF

### TP-SURF Connections

- One time login is required for personal devices to connect to TP-SURF.
- Subsequent login to the same device will only be required after 90 days from first login.

5. “Self-Registration Success” page displayed.
6. Guest can save a copy of the information for subsequent login or sign on immediately by clicking the “Sign On” button.
7. Guest will also receive an email of his/her login credential.



## USER GUIDE FOR CONNECTING TO TP-SURF

### FAQ

- 1) What is the duration of the self-registered account?
  - 5 days
- 2) What is the maximum devices guest can register?
  - 3 devices
- 3) What happen if guest has forgotten his password after registration? (if guest has not login after registration)
  - Guest can reset his/her password from the login page.

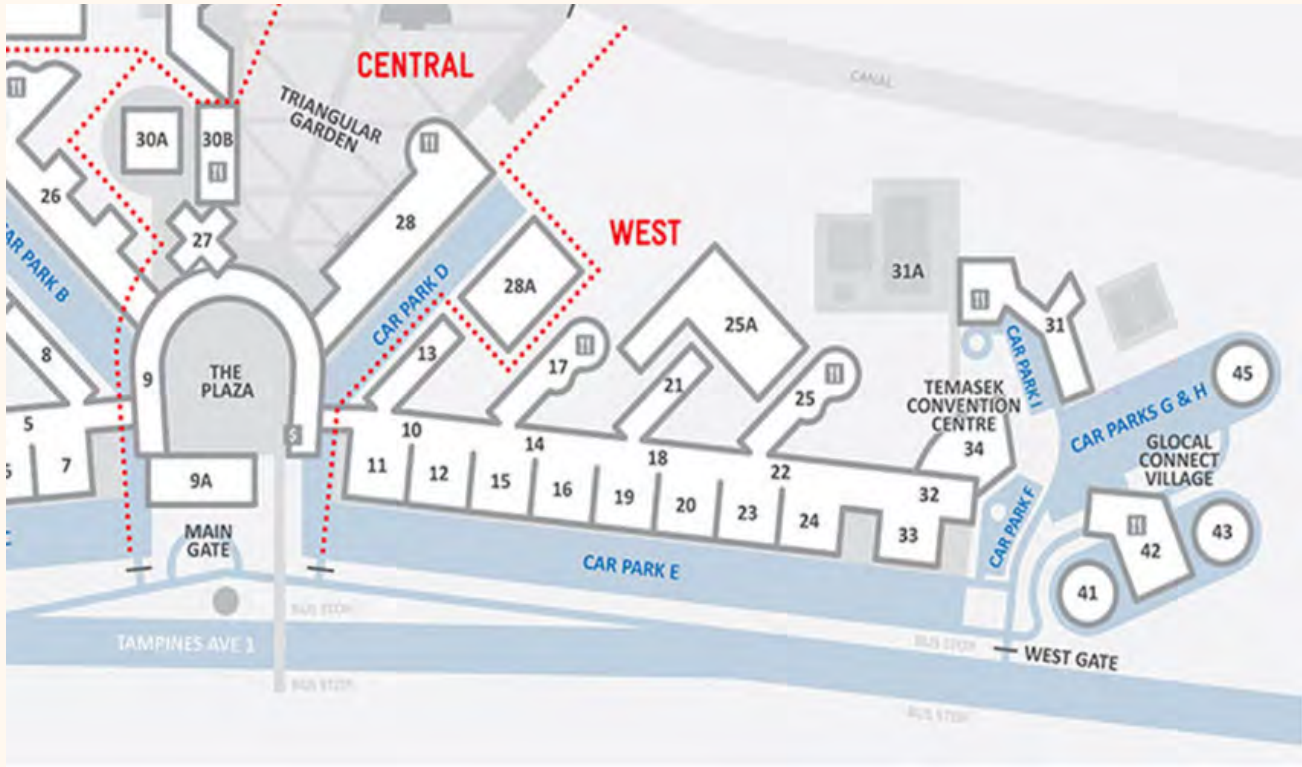


The screenshot shows a web browser window titled "Welcome to Temasek...". The main heading is "Sign On". Below the heading, it says "Welcome to the Temasek Polytechnic Wireless Network. Sign on with the username and password provided to you." There are two input fields: "Username:" and "Password:". The "Password:" field has a red box around it with the text "Reset Password" next to it. Below the input fields is a blue "Sign On" button. At the bottom, there is a link that says "Don't have an account?".

- 4) How do I go to the Wi-Fi login page ?
  - Connect to the SSID "TP-SURF" and you will be redirected to the Wi-Fi login page.
- 5) What happen if my account expire, and I need to continue to do my work in TP?
  - You need to re-register for another new account.



## LOCATION MAPS - TP CONVENTION CENTRE & ROOMS



- Block 34      Temasek Convention Centre
- Car Park E    Bus Pick Up and Drop Off
- Block 18      Level 5 - Rooms 85, 86, 87, 88 [Sustainable Living]
- Block 18      Level 6 - Rooms 106, 107, 108, 109 [Resilient Future]
- Block 22      Level 5 - Rooms 128, 129, 130, 131 [Green Economy]
- Block 22      Level 6 - Rooms 153, 154, 155, 156 [Green Resources]



## LOCATION MAPS - TP TEAMBUILDING VENUES

Temasek Aviation  
Academy  
(ENG Block 25-03-01)



Corridor Space  
(ENG Block 23  
Level 3)

## LOCATION MAPS - TP TEAMBUILDING VENUES

Function Room  
(ENG Block 32-03-7/1)



Block 34 Level 1

## LOCATION MAPS - TP DINING VENUES



Outside TCC  
Level 3 Corridor  
(ENGINE between Block 32 & 22)



TCC Foyer

## LOCATION MAPS - TP COMMAND CENTRE



Command Centre  
(ENG Block 32-03-7/1)

## LEARNING JOURNEY PACK LIST

### **Bring the following in a day pack:**

1. Writing material
2. Filled water bottle [1 litre]
3. Hat and shades
4. Mosquito repellent
5. Sun Block
6. Face Masks (in case of haze and poor air quality)
7. Umbrella (in case of hot sun or rain when outdoors)

### **Dos on Learning Journeys:**

1. Wear closed-toe shoes
2. Board the correct bus
3. Be orderly
4. Listen and follow instructions from the guides
5. Be aware of the environment and stay close as a group
6. Speak respectfully at all times
7. Be responsible for your personal safety and belongings
8. Inform your group if you need to use the toilets and go with another person
9. Speak when you are not interrupting or distracting others
10. Be careful of nests and hives - alert others if there is danger
11. Take pictures if you can do it safely
12. Learn as much as you can



## OVERSEAS PACK LIST

### Bring the following:

1. Valid Passport
2. Foreigners – MUST bring your Study Pass / Work Permit (in order to re-enter Singapore)
3. Laptop and charging cable
4. Handphone & charger
5. Clothes for 2 days [PF23 T-shirts & Polo, own poly T-shirts, pants/jeans, undergarments, covered shoes, socks, clothes & shoes for the social night, slippers for use in the hotel]
6. A small day bag/backpack for the learning journey
7. Personal toiletries
8. Personal medication, Thermometer, Face masks, Hand sanitizer, Mosquito repellent
9. Writing material [sharp items should not be in hand carry]
10. Filled water bottle [1 litre]
11. Sun Protection - Cap, Sleeves, Shades, Sunblock
12. Some Malaysian Ringgit

### Take Note:

1. Do not bring excessive cash
2. Do not wear expensive jewelry
3. Do not carry, buy, or try prohibited items. The Malaysian and Singapore authorities will take action if such items or traces of such items are found on you.
4. Check details in <https://www.cnb.gov.sg/drug-information/drugs-and-inhalants>



## DEPARTING SG & IMMIGRATION MATTERS

### Malaysia Entry Requirements from Singapore:

1. Singapore passports must be valid for at least another 6 months at the time of travel
2. Foreigners – MUST bring your Student Pass or Work Permit (in order to re-enter Singapore)
3. You must pass through a manned immigration booth, and passports must be stamped before leaving the immigration booth
4. Submit the SG Arrival Card (SGAC) before returning to Singapore (Refer to <https://www.ica.gov.sg/enter-transit-depart/entering-singapore/sg-arrival-card> for more information)

### Report:

1. Report at respective Polytechnics as advised by Poly Reps
2. Wear respective poly T-shirts
3. All are to have a day pack to use upon arrival at Desaru, either for Learning Journey or for discussion sessions.

### Dos at Immigration Check Point:

1. Approach the correct lane
2. Be orderly
3. Be aware of the environment and stay close as a group
4. Speak respectfully at all times
5. Check that the passport is stamped with the correct date upon receiving it
6. Safe keep your passport at all times
7. Be responsible for your personal belongings
8. Inform your group if you need to use the toilets and go with another person

### Don'ts at Immigration Check Point:

1. Do not offer help unless you ascertain that it is not a setup to harm you
2. Do not use words that will cause alarm to travelers and activate security officers
3. Do not take photographs or videos



## DOS & DON'TS AT DESARU

### **Dos at the Resort:**

1. Do keep valuables secure.
2. Do conserve resources. Be mindful of energy and water consumption. Turn off lights, TV, and AC when you leave the room.
3. Do maintain noise levels. Be considerate of other guests by keeping noise levels down, especially during quiet hours. This applies to both the resort room and common areas.
4. Do follow the hotel rules. Familiarize yourself with the resort's rules and policies. This includes rules about smoking, pets, partying, and any other specific guidelines they have in place.
5. Do keep the room clean.

### **Don'ts at the Resort:**

1. Don't enter the rooms of other participants.
2. Don't damage any resort property.
3. Don't purchase alcoholic beverages.
4. Room service is not allowed.
5. Students are not allowed to leave the resort premises.
6. No students should be at the beach under any circumstances.





## LOTUS RESORT MAP



# YOU'RE INVITED!

## **WACKY** **MASQUERADE PARTY**

**Lotus Desaru Beach Resort  
Johor Bahru, Malaysia**

**Don your personalised masks  
and party with us!**



**21 September 2023, Thursday**



**6:30pm to 10pm**



**Long pants/jeans**

**Bright and colourful tops**

**Covered shoes**

**No shorts, slippers and singlets**



## SOCIAL NIGHT INFO AND PREPARATION

Time	SOCIAL NIGHT PROGRAMME
5:30 PM	Photo Booth (Ready, Get Set, Wefie!) & Serving of refreshments
6:30 PM	Party venue is ready for everyone to take their seat. All students MUST be wearing their masks upon entry to the party venue
6:40 PM	Welcome address by Emcee followed by Commencement of Buffet Dinner
7:15 PM	1st Game Segment: Sus(tainability) QUIZ p1/2
7:30 PM	2nd Game Segment: Wacky Mask Pageant
8:00 PM	3rd Game Segment: Sus(tainability) QUIZ p2/2
8:15 PM	4th Game Segment: Groovy Night
8:45 PM	Party continues with the DJ/MC Up the Music
9:00 PM	Announcement of Winners for the Groovy Night & BIGGEST Winner from the Daily Energizers Mentimeter Quiz
9:30 PM	Party continues. Free & Easy
10:00 PM	End of Programme



## SOCIAL NIGHT INFO AND PREPARATION

### 2. Preparation for the Wacky Mask Pageant

i. Please REMEMBER to pack and bring along your self-made mask to Desaru, Malaysia to vie for the title of

- Miss Wackiest Masker
- Mr. Wackiest Masker

ii. Your self-made mask MUST be made from

- Recyclable products (cloth/paper/plastic)
- Natural resources (e.g. dry leaf/twigs)



**Examples of Masks**

## SOCIAL NIGHT INFO AND PREPARATION

### 3. Preparation & Practice for Groovy Night

i. You will be introduced to your groovy leader for each Sub-theme on 15 September 2023.

ii. Please approach him/her if you want to represent your sub-theme in the Groovy Night Battle to vie for the title of

- *Most Creative RAP Performance*
- *Grooviest Dancers*
- *Melodic Rap Performance (Strong and clear presence of rap tempo inclusive of performance elements from non-rap genres)*
- *PROP Groovers. (Use of recyclable props)*

iii. Each group of Groovy Dancers and rappers will be represented with the number of members in a performance lasting approximately 5 minutes

- *10 – 15 members*
- *Minimum 2 female members*



## IMPORTANT INFORMATION

1. Mosque and Quiet Room information:



2. Reach out to your Poly Rep if you need assistance during the Forum.

3. See Consular info for your destination at [go.gov.sg/travel-malaysia](https://go.gov.sg/travel-malaysia).

For help:

CONSULATE-GENERAL OF THE REPUBLIC OF SINGAPORE - MALAYSIA  
(JOHOR BAHRU)

Tel: +60-7-226-5012

Emergency: +60-19-791-1166

MFA Duty Office +65 6379 8800



# ACKNOWLEDGEMENTS

*This event is organised as part of:*



**Powered By:**



**Sponsors:**



**Partners:**

